



HR and Cultural Change

New Operating Model
Launch Date 1st June 2025



Proposed Operating Model

This diagram links how the 3 service functions will operate through a share vision and purpose.

In the proposed operating model, we will:

- Need to work differently
- Need to change the way we do things





HR and Cultural Change Leadership Team



Other Project Team
Resources :

Programme
Manager (GR15)

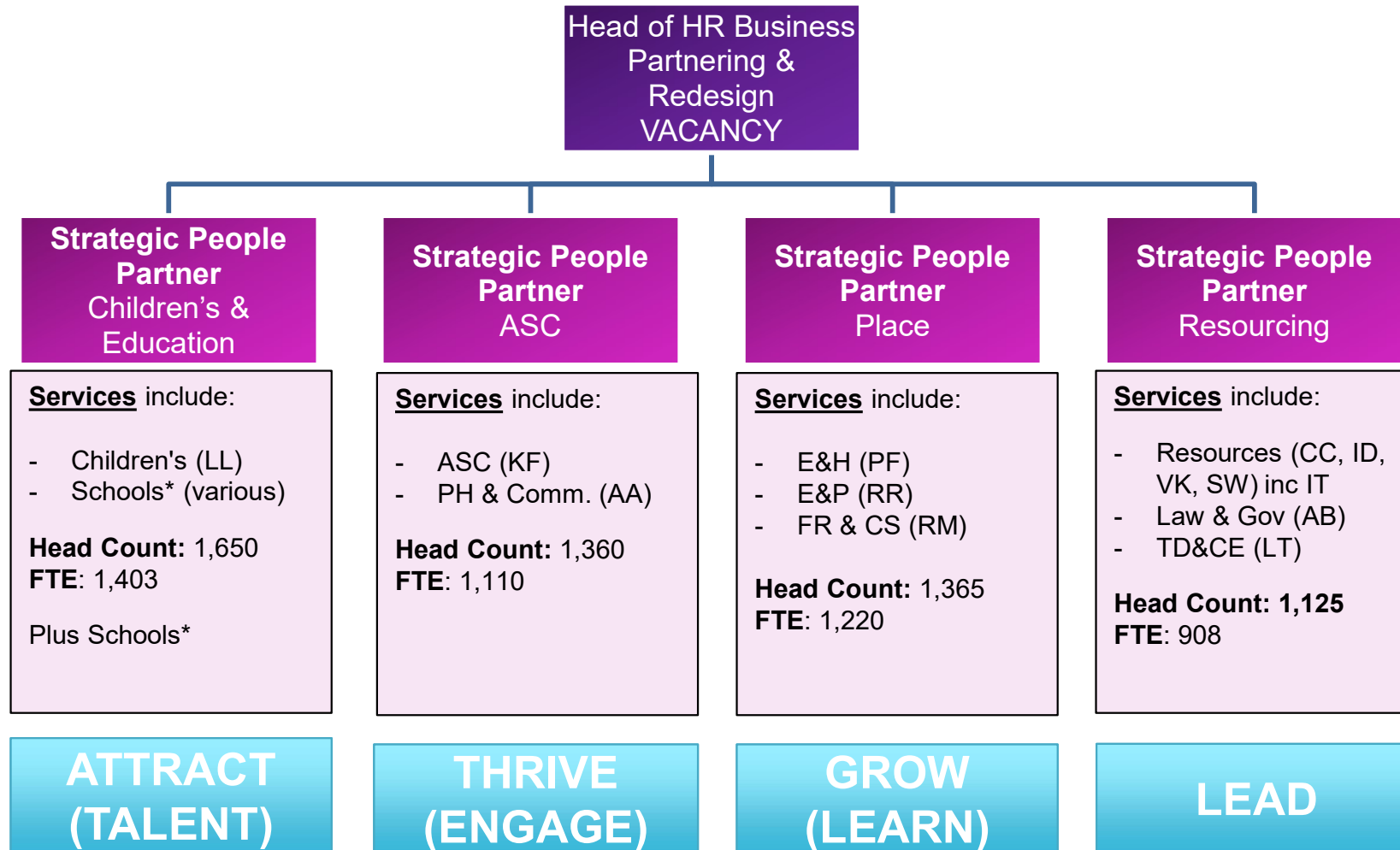
Project Manager
(GR12)

Project Manager
(GR12)

Project Manager
(GR12)

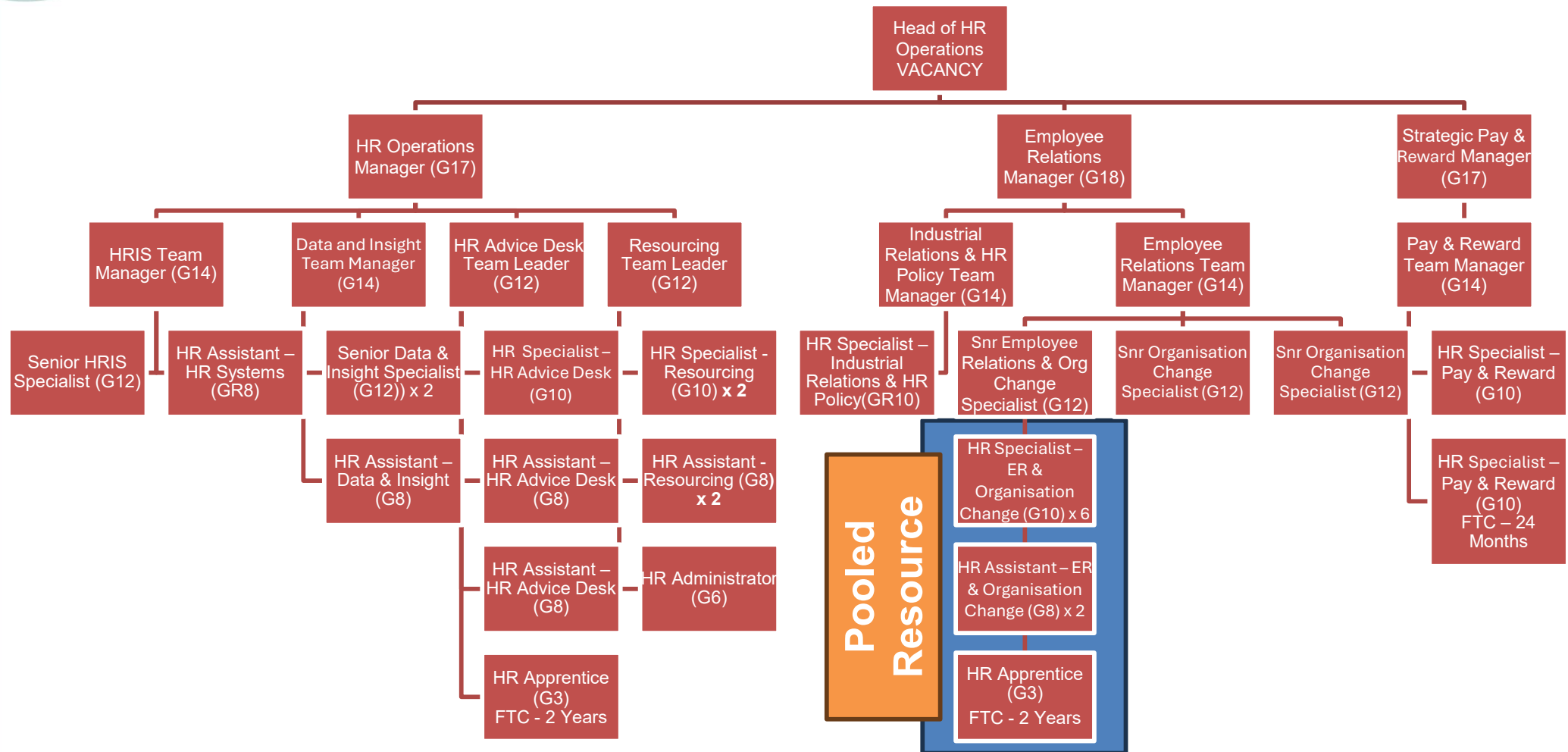


Partnering





HR Operations





Centre of Excellence

